

MAAP #40: Early Warning Deforestation Alerts in the Peruvian Amazon

GLAD alerts are a powerful new tool to monitor forest loss in the Peruvian Amazon in near real-time. This early warning system, created by the [GLAD \(Global Land Analysis and Discovery\) laboratory](#) at the University of Maryland and supported by [Global Forest Watch](#), was launched in March 2016 as the first Landsat-based (30-meter resolution) forest loss alert system (previous systems were based on lower-resolution imagery). The alerts are updated weekly and can be accessed through [Global Forest Watch](#) (Image 40a, left panel) or [GeoBosques](#) (Image 40a, right panel), a web portal operated by the Peruvian Ministry of Environment.

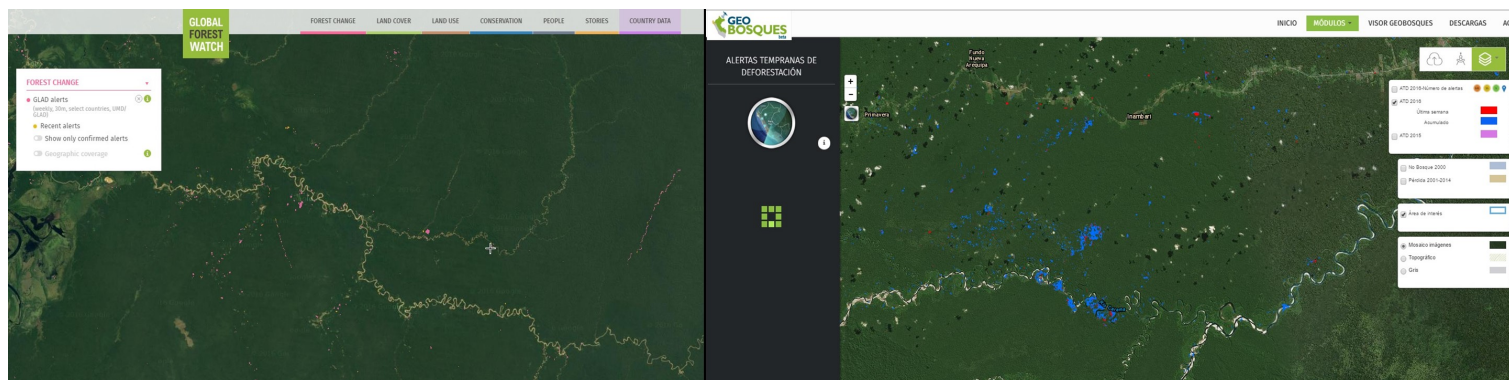


Image 40a. Data: UMD/GLAD, WRI/GFW, PNCB/MINAM

In **MAAP**, we often combine these alerts with analysis of high-resolution satellite imagery (courtesy of the [Planet](#) Ambassador Program and [Digital Globe](#) NextView service) to better understand patterns and drivers of deforestation in near real-time. In this article, we highlight **3 examples** of this type of innovative analysis from across the Peruvian Amazon:

Example 1: Logging Roads in central Peru (Ucayali)

Example 2: Invasion of Ecotourism Concessions in southern Peru (Madre de Dios)

Example 3: Buffer Zone of Cordillera Azul National Park (Loreto)

Example 1: Logging Roads in central Peru (Ucayali)

In the previous [MAAP #18](#), we documented the proliferation of **logging roads** in the central Peruvian Amazon during 2015. In recent weeks, we have seen the start of rapid new logging road construction for 2016. **Image 40b** shows the linear forest loss associated with two new logging roads along the Tamaya river in the remote central Peruvian Amazon (Ucayali region). Red indicates the 2016 road construction (35.8 km). **Insets A and B** indicate the areas shown in the high-resolution zooms below.

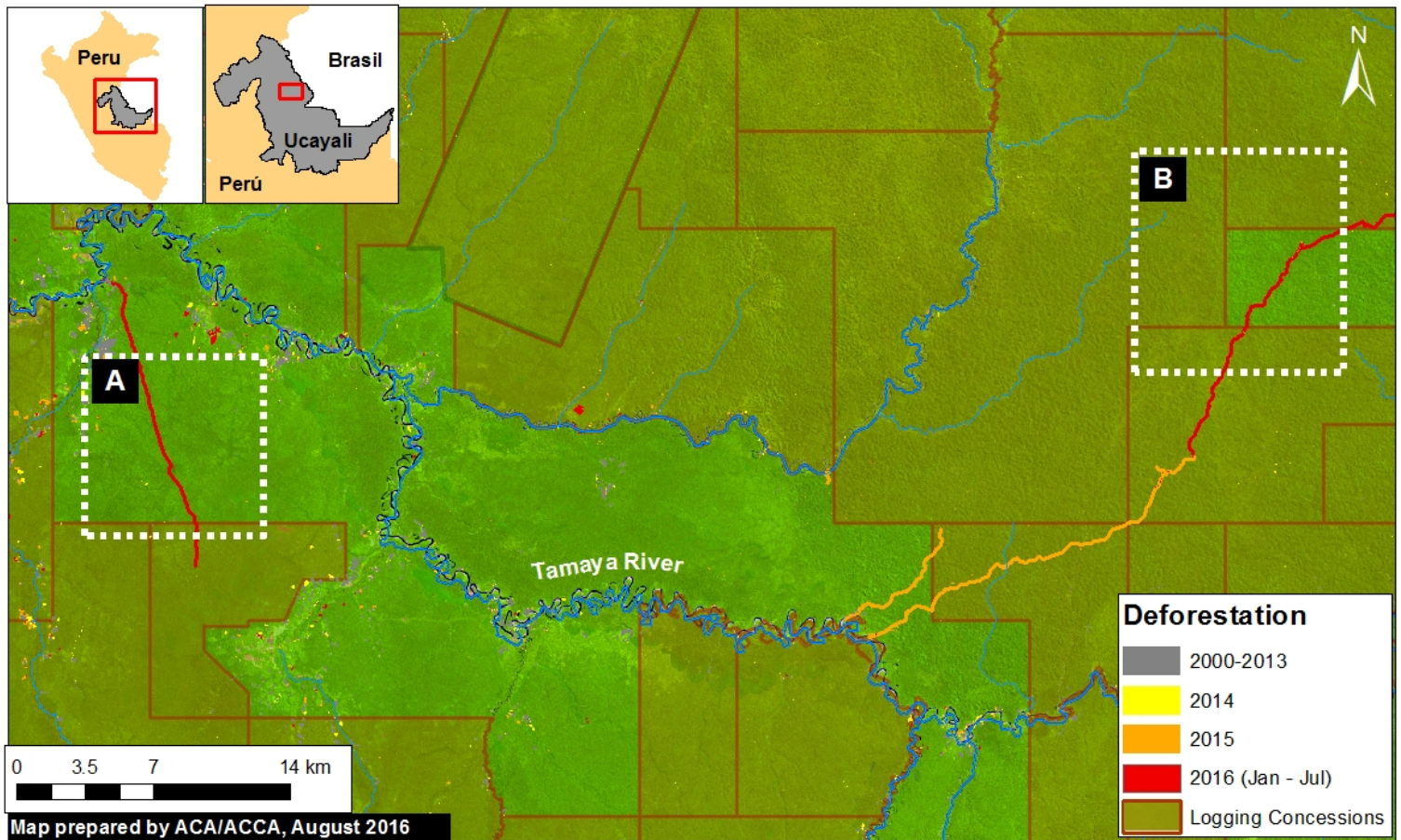


Image 40b. Data: UMD/GLAD, Hansen/UMD/Google/USGS/NASA, MINAGRI

The following images show, in high-resolution, the **rapid construction of logging roads** in 2016. **Image 40c** shows the construction of 16.1 km between March (left panel) and July (right panel) 2016 in the area indicated by Inset A. **Image 40d** shows the construction of 19.7 km between June (left panel) and July (right panel) 2016 in the area indicated by Inset B.



Image 40c. Data: Planet

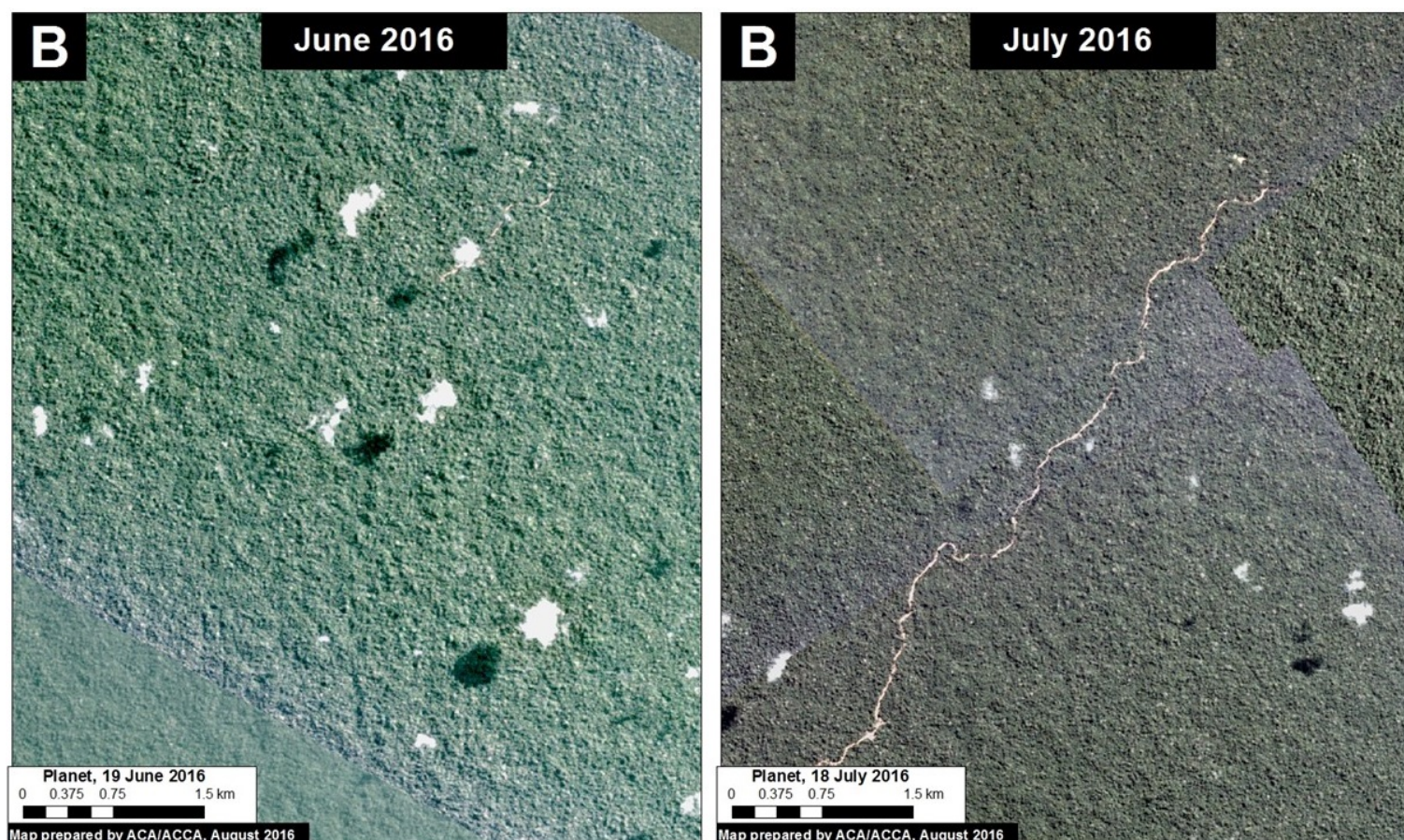


Image 40d. Data: Planet

Example 2: Invasion of Ecotourism Concessions in southern Peru (Madre de Dios)

Image 40e shows the recent deforestation within two **ecotourism concessions** along the **Las Piedras River** in the Madre de Dios region. Red indicates the 2016 GLAD alerts (67.3 hectares). Note that the Las Piedras Amazon Center (LPAC) Ecotourism Concession represents an effective barrier against deforestation occurring in the surrounding concessions. According to local sources, the main drivers of deforestation in the area are related to the establishment of cacao plantations and cattle pasture (see s [MAAP #23](#)). **Inset A** indicates the areas shown in the high-resolution zoom below.

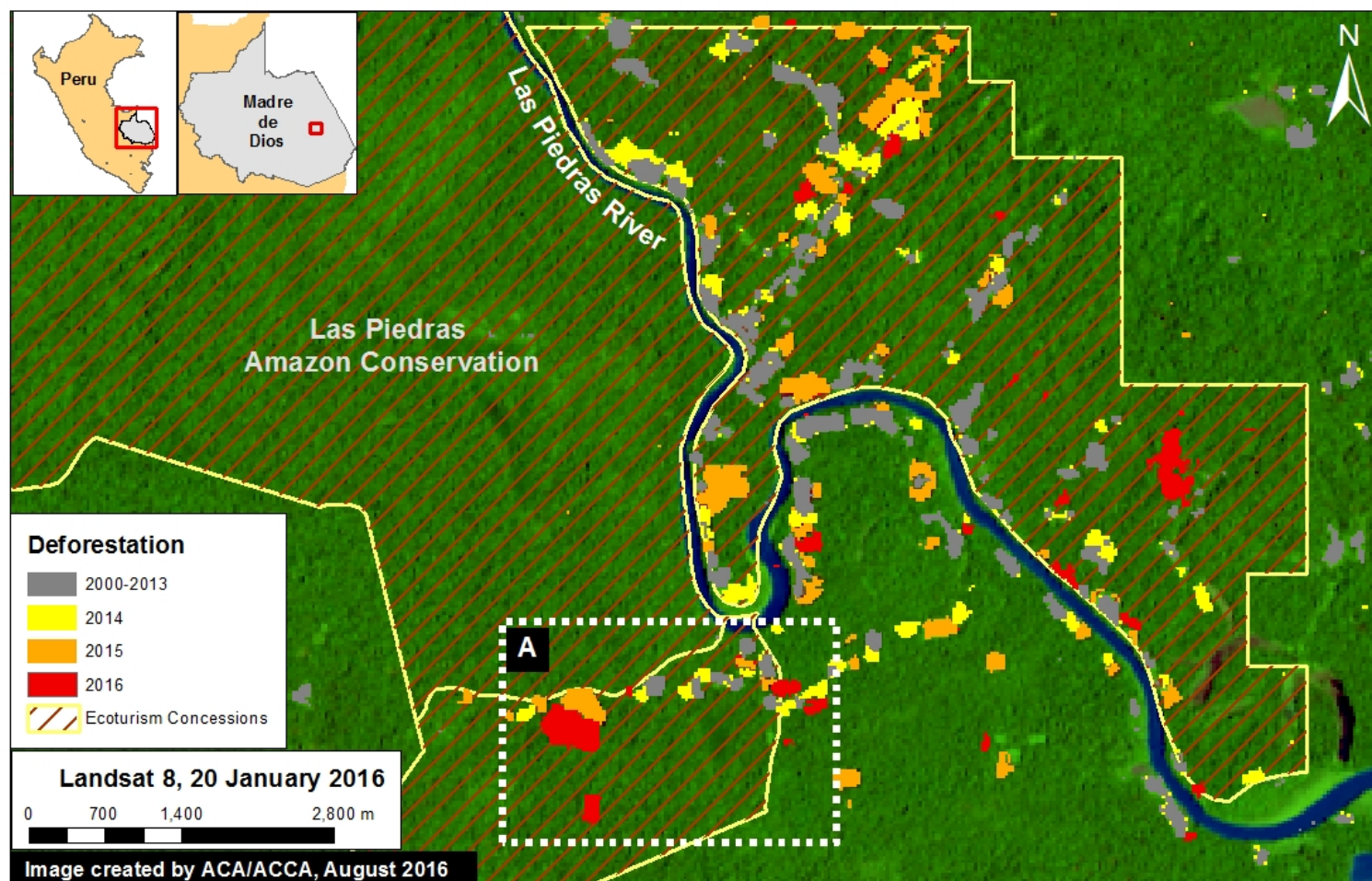


Image 40e. Data: UMD/GLAD, Hansen/UMD/Google/USGS/NASA, MINAGRI

Image 40f shows high-resolution images of the area indicated by Inset A between April (left panel) and July (right panel) 2016. The yellow circles indicate areas of deforestation between these dates.

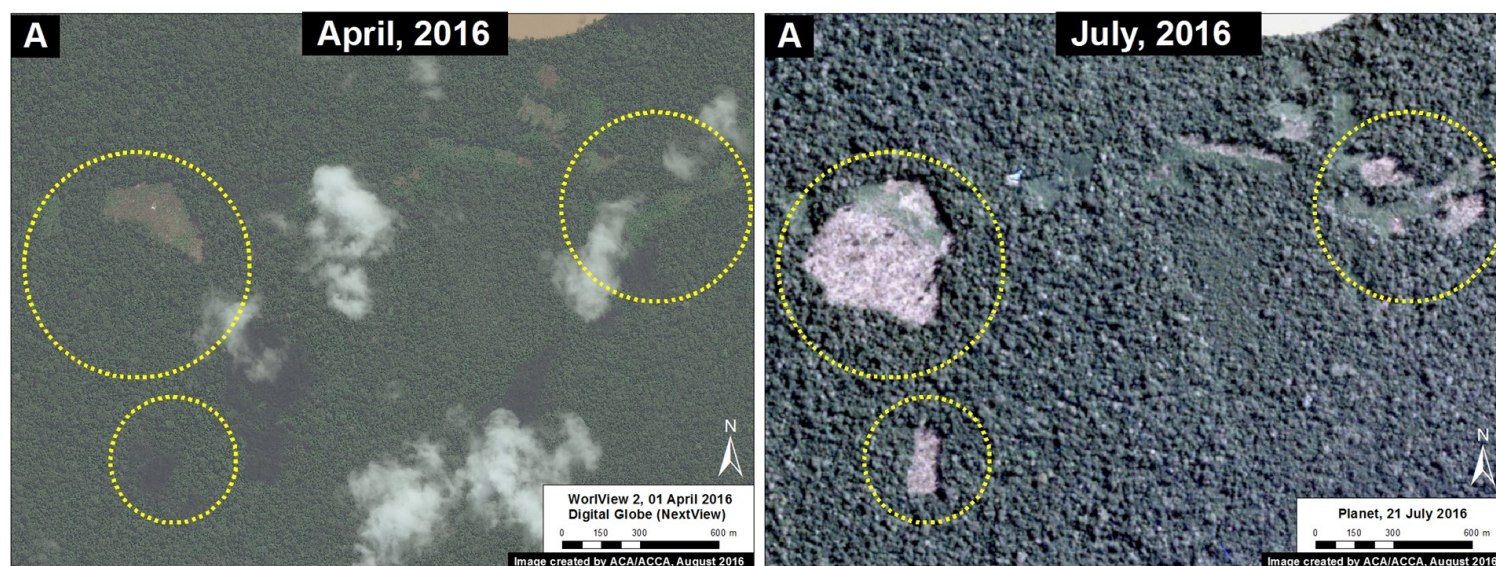


Image 40f. Data: Planet, DigitalGlobe (Nextview)

Example 3: Buffer Zone of Cordillera Azul National Park (Loreto)

2016. This PDF was generated from MAAPROJECT.org MAAP is developed by Amazon Conservation Association (ACA) and Conservación Amazónica (ACCA) All use is Open-Access, but must contain an attribution link back to maaproject.org or the citation at the end of the article.

Citation

Finer M, Novoa S, Goldthwait E (2016) Early Alerts of Deforestation in the Peruvian Amazon. MAAP: 40.